



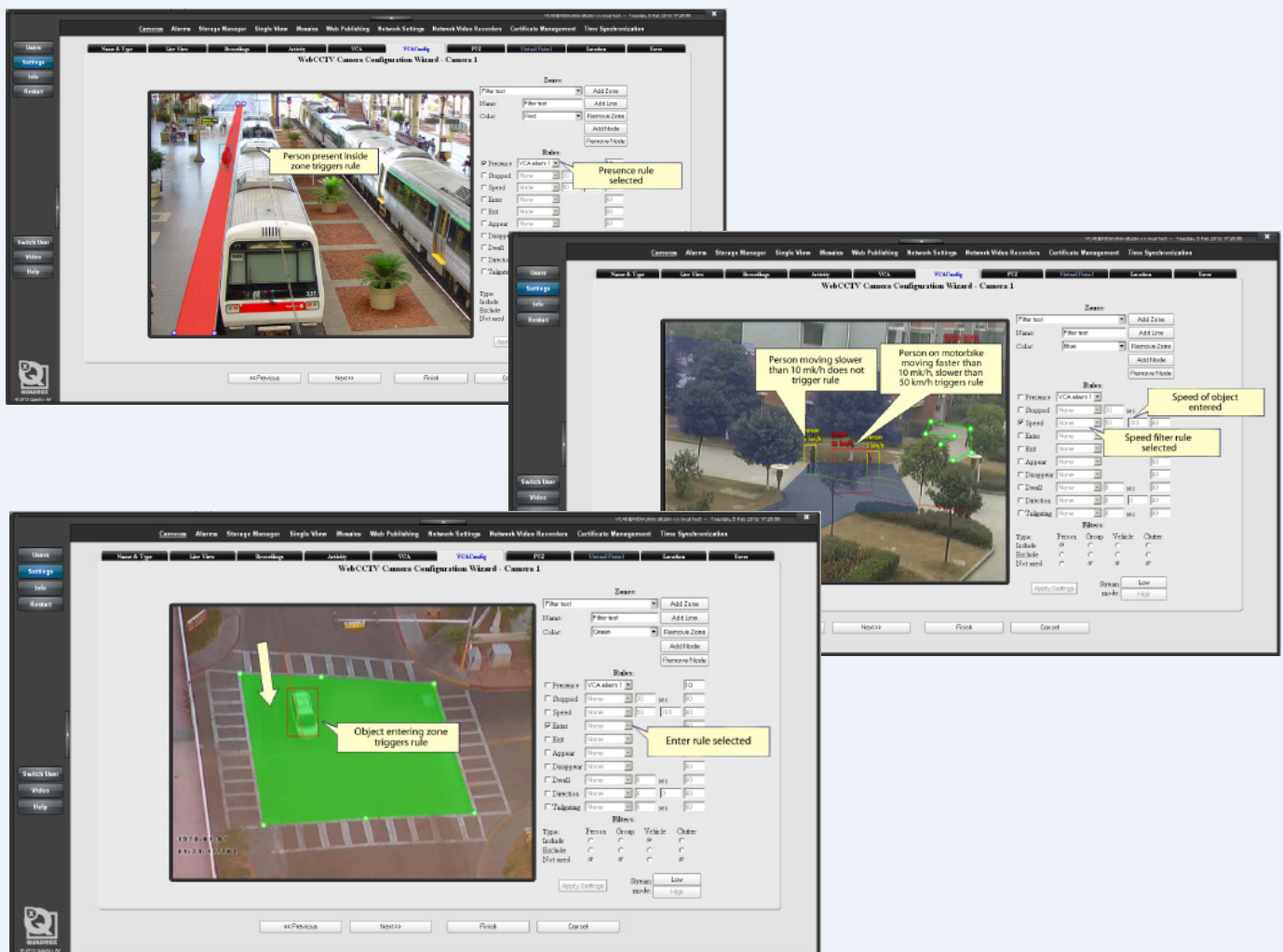
# Quadrox Video Analytics

## Advanced Protection and Monitoring

**Quadrox Video Analytics** is a highly reliable video analytics system which offers an easy to use, cost-effective, highly accurate and flexible solution for multiple surveillance applications.

### QVA – easy and effective surveillance solution

- Robust tracking engine - resistant to sources of false alarm due to changing environmental conditions;
- Automatical adaptation to varying lighting and weather conditions;
- Simple detection zone - via a web browser interface with no special software required;
- Standard based - HTTP API for configuration and event notification; RTSP for video streaming XML based event and tracking data output;
- Built in analytics stabilisation - working with swaying cameras without performance degradation;
- Rapid 'learning time' of ~ 5 seconds - detection is suppressed during camera movement;
- Unique, easy to use, 3D calibration - suitable for overhead and side-viewing cameras;
- Full Forensic Metadata stream in XML format for customer use.



## 1. Stopping filter

Objects that are stopped inside a zone for longer than the defined amount of time will trigger the rule and raise an alarm.

## 2. Dwell filter

Objects that dwell inside a zone for longer than the defined amount of time will trigger the rule and raise an alarm.

## 3. Enter and Exit filters

An object entered alarm is raised when an object crosses from the outside to the inside of a detection zone. Conversely, an object exited alarm is raised when an object crosses from the inside to the outside of a detection zone.

## 4. Appear and Disappear filters

An object appear alarm is raised when an object appears inside a detection zone (the object must be initially detected inside the zone without entering). Conversely an object disappear alarm is raised when an object disappears inside a detection zone.

## 5. Speed filter

Objects that travel within the bounds of the configured speeds, through a zone or over a line trigger the rule and raise an alarm.

## 6. Filter on object class

Makes it possible to include or exclude specific object types in the detection rules.

## 7. Direction filter

Objects that travel in the configured direction (within the limits of the acceptance angle) through a zone or over a line trigger the rule and raise an alarm.

## 8. Presence filter

Objects that are present inside a zone or pass through a line will trigger the rule and raise an alarm.

