

Quick Installation Guide



Count!Guard

Let's make things safer!

This quick installation guide allows you to install and configure Count!Guard by following a couple steps. Please follow the steps:

Step 1: Camera Selection & Placement

- The camera is positioned higher than 2,50 meters (8.2 feet).
- The camera is mounted vertically (horizontal and vertical deviation angle = 0°). This means it is looking straight down.
- The camera delivers +/-25 fps to the WebCCTV server.
- The image resolution has to be at least QVGA (320x240).
- Lighting conditions: daylight or similar lighting.
- The camera streams in JPEG.



The working of Count!Guard cannot be supported if all conditions are not completely fulfilled. Not meeting these requirements may lead to inaccurate counts and abnormal behavior of the Count!Guard application.

Step 2: Install Count!Guard

- Insert the installation CD in you CD/DVD-ROM. If Autorun is disabled, go to **My Computer** and double-click on the drive icon that corresponds to your CD/DVD-drive. Click the **Count!Guard installation** button.
- If not all required software is installed, you will get a screen that software is missing. Click **Yes**. If all required software is installed, this step will be skipped.

Step 3: Configure Count!Guard

Open the web application by clicking the Count!Guard Web icon on your desktop. Enter your credentials on the login page that appears.



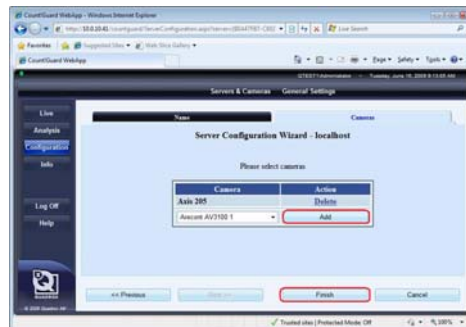
You can login with the same credentials as for WebCCTV. Count!Guard uses the WebCCTV user management for its authentication.

Execute the following steps:

- **Add your server**



- **Add your camera** - Select the server in the **Servers & Cameras** page, click the **Edit Server** link and select the **Cameras** tab.

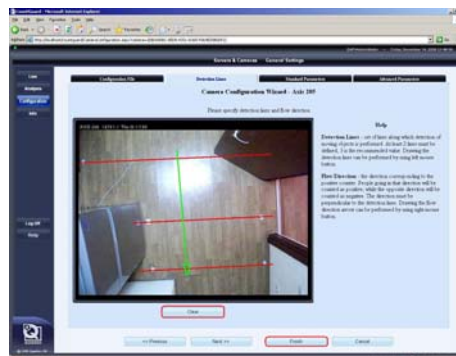


- **Configure Count Algorithm (Step 4)**

Step 4: Configure Count Algorithm

Click the **Edit** link on Servers & Cameras page. The Camera Configuration Wizard is opened in the **Configuration File** tab:

- Draw Detection Lines
- Draw Flow Direction
- Enter People Width
- Enter Camera Height
- Camera angle with V Axis
- Enter Camera Field of View



For more information or questions, contact support@quadrox.be