



Installation Manual

Alarm Component



Let's Make Things Safer!



Contents

CONTENTS	2
1 INTRODUCTION	3
2 INSTALLATION	5
2.1 TYPICAL	7
2.2 CUSTOM	8
2.2.1 <i>Local Database</i>	8
2.2.2 <i>Remote Database</i>	10
3 CONFIGURATION	12

1 Introduction

This manual is intended for administrators of WebCCTV and is applicable for version 4.5.0.0



WebCCTV can be replaced by GuardNVR in this manual at all times.



The WebCCTV server has to be installed in order to install the Alarm Component.

The Alarm Component is an add-on of WebCCTV which allows the server to receive and store input alarms/events from external devices. Alarms can be generated in different ways:

Hardware Alarms:

- **Physical alarm-input device** (screw-block to attach physical wires) attached at the back of the WebCCTV unit together with a digitizer card (**Picolo Pro** series)
- **PMD I/O Device** (screw-block to attach physical wires) attached to the WebCCTV unit via a USB cable
- **Physical alarm** input connected to the **I/O** contacts of the camera

Software Alarms:

- Alarms by the **OPC A&E protocol**; hence you are able to connect any OPC A&E compliant alarm server to the WebCCTV Alarm Component
- Alarms by the **Common Alerting Protocol (CAP)**, an xml-based data format for exchanging public warnings and emergencies between alerting technologies. CAP allows a warning message to be consistently disseminated simultaneously over many warning systems to many applications
- **MvRedlight Alarm Driver** allows capturing traffic monitoring events
- **Generic Alarms** triggered using the WebCCTV **SDK**

POS Alarms:

- **Generic POS Alarms** allows for the generation of tickets (events) in an easy way for different purposes. This is done by **SDK**.
- **Serial Port POS Driver** allows capturing tickets (events) sent by POS devices.
- **NAMOS POS Driver** is a customized driver for NAMOS based POS applications.
- **TP.NET POS Driver** is a **PosLog compliant** driver which allows capturing tickets (events) that are transmitted over the network by using the PosLog standard.

Based on the incoming alarms (e.g. infrared based motion detectors, door and windows sensors, tamper detection, POS tickets, etc.), output reactions can be configured or triggered if desired. Some examples:

- Beep
- Switch to camera
- Switch to PTZ preset of camera
- Email
- SMS
- Image export and upload (FTP)
- Movie export and upload (FTP)
- OPC A&E event
- Switch I/O output relay
- Execute script
- Your own reactions created by the SDK (Arm/Disarm groups, cameras, devices... etc)

2 Installation

Before you can install the Alarm Component, the following components have to be installed:

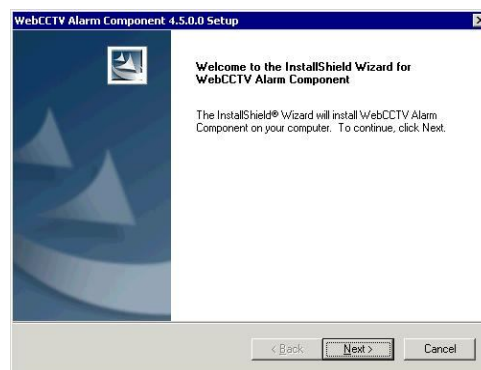
- WebCCTV Server 4.5.0.0 (or higher)
- Microsoft Framework .NET 2.1 (or higher)
- Microsoft SQL Server 2005 Express Edition with Advanced services (or better)



The Microsoft Framework .NET 2.1 and Microsoft SQL Server 2005 Express Edition with Advanced services may be installed already on your system. The setup will inform you if a component is not yet installed. If the setup finds the missing component, it will try to install it automatically; otherwise this component has to be installed manually.

Installing the Alarm Component is done in several steps:

- Open the **Optional Components** folder on the desktop and click the **Alarm Component Setup** link. The setup application will start automatically.
- The welcome screen appears. Click **Next**.

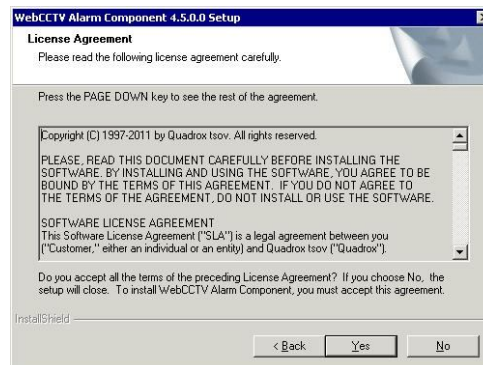


Welcome Screen

- Accept the License Agreement. Click **Yes**.



Please read the License Agreement carefully. If you don't agree with the terms, you can't install the Alarm Component.



License Agreement Screen

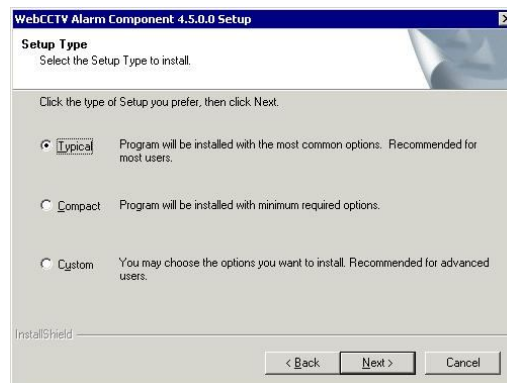
- Select the setup type and click **Next**. The following table gives an overview of the different options depending on the setup type:

		Typical (Chapter 2.1)	Custom (Chapter 2.2)
Alarm Drivers	Alarm Components: <ul style="list-style-type: none"> ▪ Generic SDK alarm driver ▪ OPC alarm driver 	x	x
	MvRedlight alarm driver (CAP alarm driver)		Optional
POS Drivers	Serial Port POS driver (Includes Generic POS driver)	x	Optional
	TP.Net POS driver (PosLog)		Optional
	NAMOS POS driver		Optional
	Local/Remote SQL database	Local	Local or Remote



Typical is the default setup type. This is advised for normal installations.

Depending on the setup type, the remaining part of the installation will differ slightly. See the next chapters for more information.

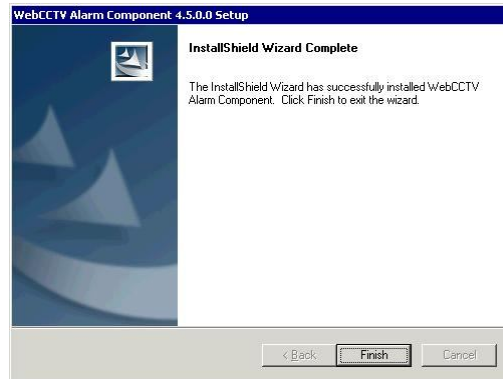


Setup Type Screen

2.1 Typical

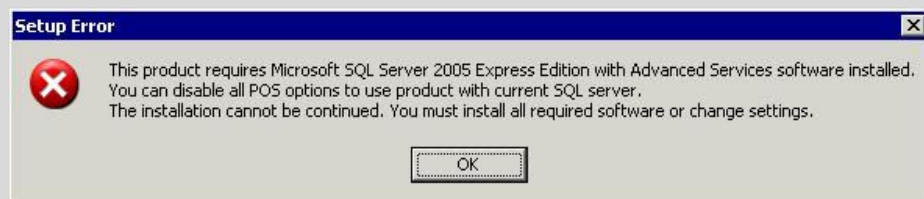
You have selected **typical** in the setup type screen and clicked **Next**. Please execute the following steps:

- The Alarm Component installation will start automatically. Click **Finish**.



Finish Installation Screen

If Microsoft SQL Server Express Edition or higher is not yet installed, the setup will inform you about this and check for automatic installation. If not, it will ask you to install it first manually.

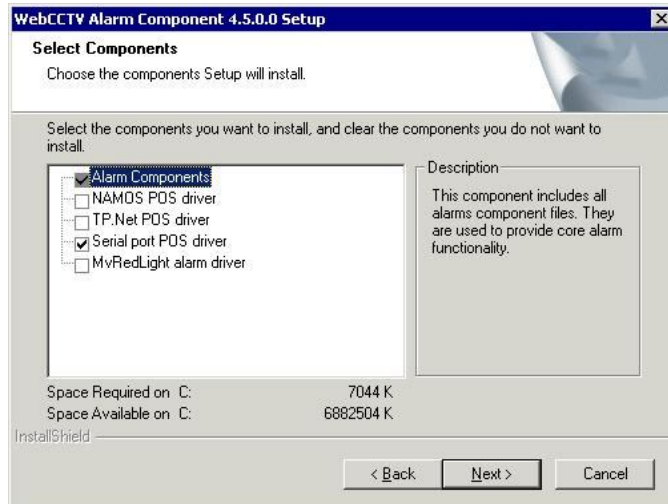


The alarm component is now installed.

2.2 Custom

You have selected **custom** in the setup type screen and clicked **Next**. Please execute the following steps:

- Select the components you want in the Select Components screen and click **Next**.

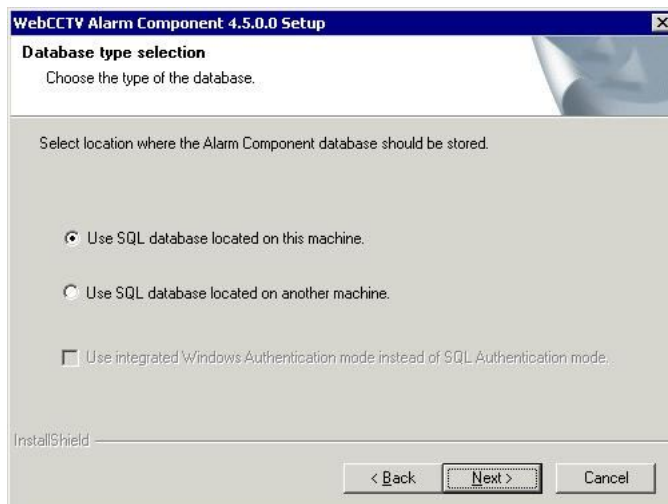


Select Components Screen

- Choose if you want a **local** or **remote** SQL database.

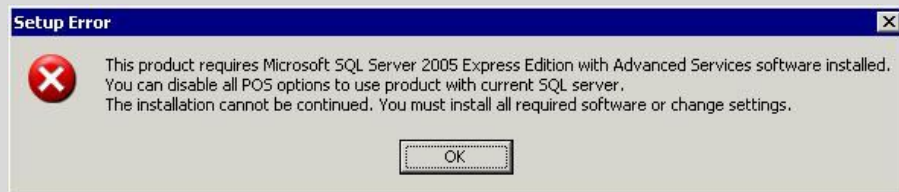
2.2.1 Local Database

- Select “**Use SQL database located on this machine**” and click **Next**.

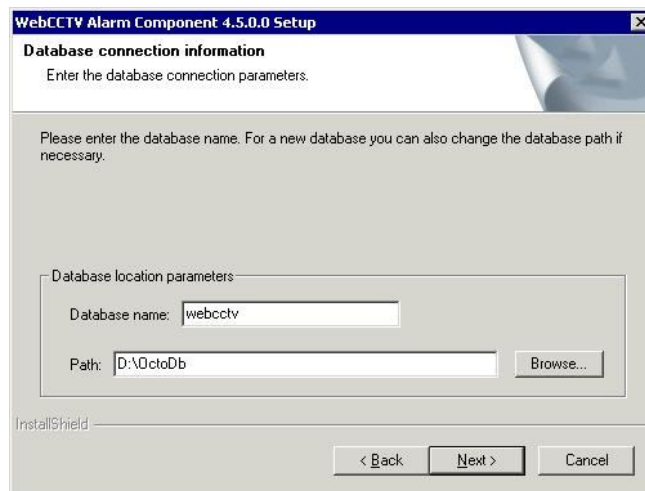


Database Type Selection Screen

If Microsoft SQL Server Express Edition with Advanced features or higher is not yet installed, the setup will inform you about this and check if it can install it automatically. If not, it will ask you to install it first manually.



- Specify the database name and path and click **Next**. The Alarm Component installation will start automatically.



Database Connection Information Screen

- Click **Finish**.



Finish Installation Screen

The alarm component is now installed.

2.2.2 Remote Database

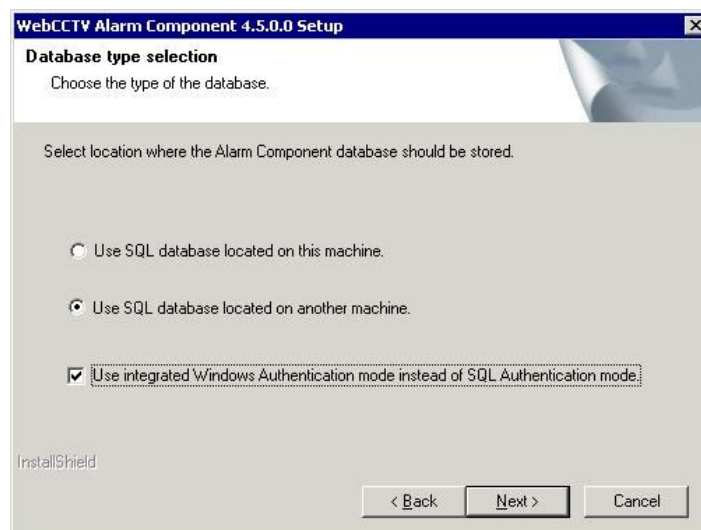
If you want to use a remote database, then this database has to be created **before** installing the Alarm Component.



During the Alarm Component installation, all necessary tables will be created in the existing remote database.

- Select “Use SQL database located on another machine” and choose the authentication type:
 - Select the “Use integrated Windows Authentication mode instead of SQL Server Authentication mode” check box if you want the Alarm Component to connect to the database using Windows accounts.
 - Deselect the “Use integrated Windows Authentication mode instead of SQL Server Authentication mode” check box if you want the WebCCTV Alarm Component to connect to the database using the SQL Server accounts. (Default Installation)

Click **Next**.



Database Type Selection Screen

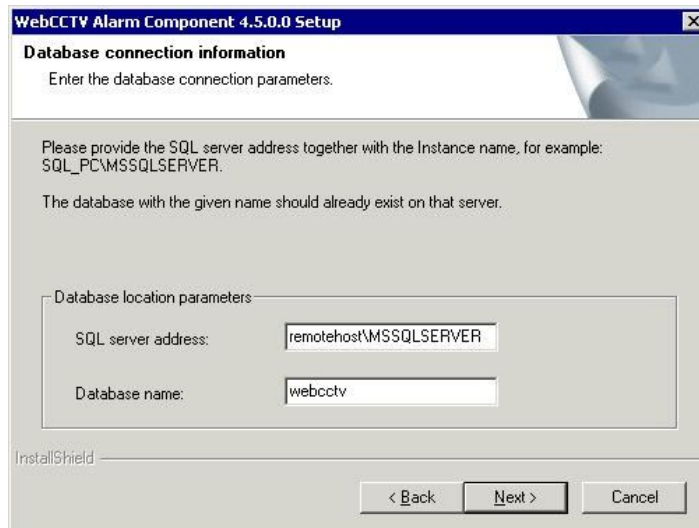
- Specify the **SQL server address** (this is the name of the computer and name of the SQL Server) and the **database name**. Click **Next**.

In order to make the connection to the SQL database possible, it is necessary to open some ports on the firewall and router:



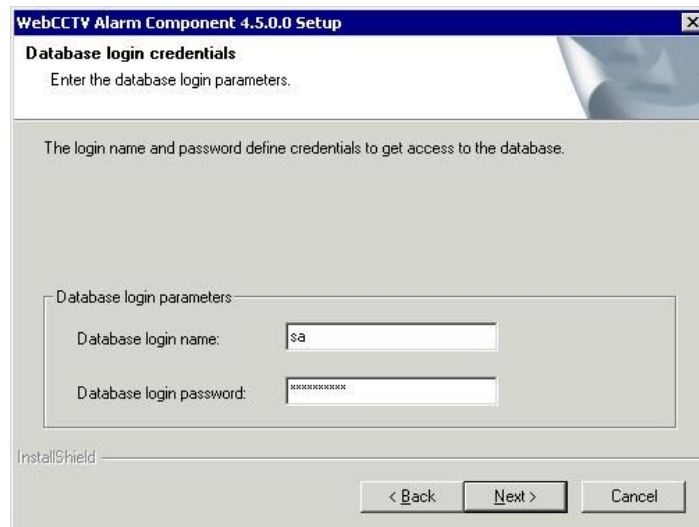
- **TCP Port 1433**
- **UDP Port 1434**
- Add **Sqservr.exe** to the application exception list

For more information: <http://support.microsoft.com/kb/287932>



Database Connection Information Screen

- If you selected SQL authentication previously, you need to specify the name and password for the SQL Server account. This account is used by WebCCTV to connect to the database. Click **Next**.



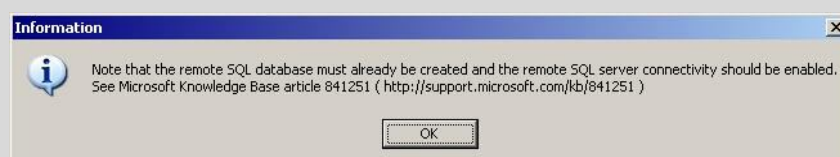
Database Login Credentials Screen



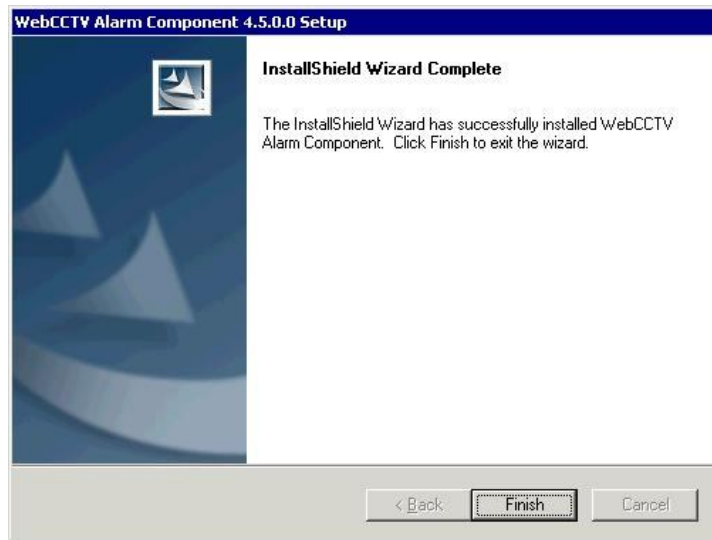
If there is no special account for the WebCCTV connection, you may use the internal SQL Server account **sa** (system administrator). To obtain the password for **sa** account – contact your system administrator.



You will get the following screen which asks you to check if your database was created before you started this installation!



Click **Finish**.



Finish Installation Screen

The alarm component is now installed.

3 Configuration

The User Manual for Alarms has been incorporated in the WebCCTV User Manual.